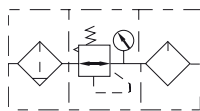


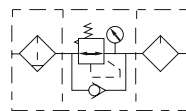


## Symbol

No reflux valve is attached



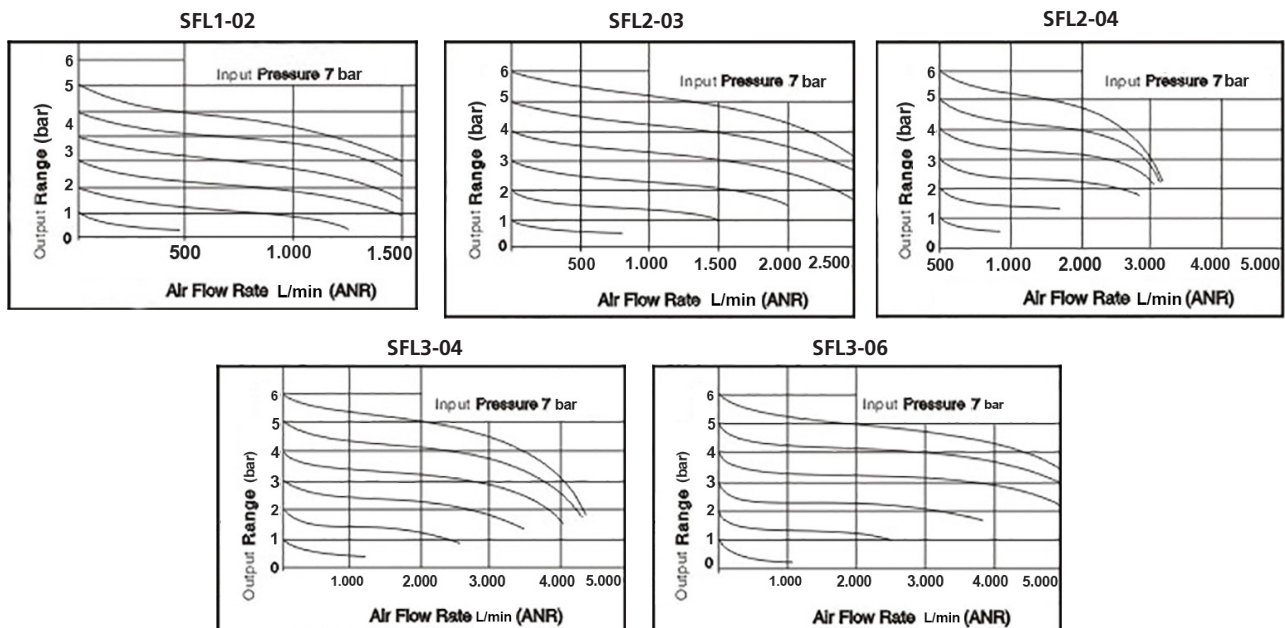
Reflux valve is attached



## Product feature

1. Compact size, light weight, good performance, easy use, charming appearance.
2. It adopts the modular connection, it may be used individually or by combination with easy installation. The embedded pressure gauge shortens the mounting time.
3. Manual drain and fully auto drain for your selection.
4. The precision air regulator has fine flow-pressure characteristics. The hand wheel with self-locking function is fit for any vibration environment.
5. The lubricator utilizes the novel drops control mechanism to fulfill the oil adding with air on. The inside flow sensor ensures the low atomizing flow, thin oil mist particles and long transmission distance.

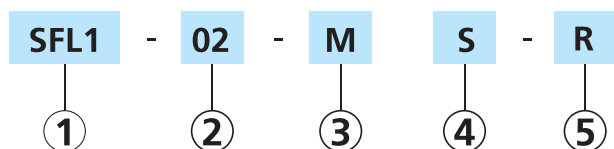
## Pressure and feature of flow



## Specification

Model	SFL1-02	SFL2-03	SFL2-04	SFL3-04	SFL3-06
Fluid	Air				
Port size	1/4"	3/8"	1/2"	1/2"	3/4"
Filtering grade	5 μm				
Pressure range	Automatic drain: 1.5 ~ 9 bar(20~130Psi)				
	Manual drain: 0.5 ~ 9 bar(7~130Psi)				
Proof pressure	15 bar(215 Psi)				
Temperature range	-20~70°C				
Capacity of drain bowl	12 ml	45 ml		80 ml	
Capacity of oil bowl	20 ml	85 ml		170 ml	
Recommended lubricant	ISO VG 32 or equivalent				

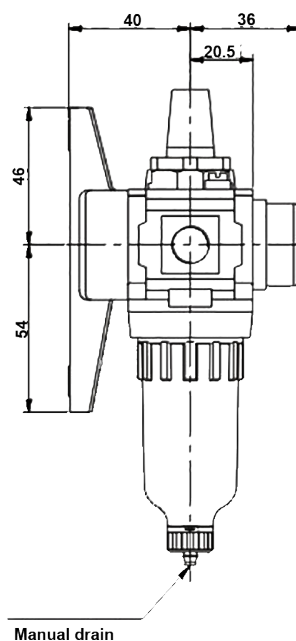
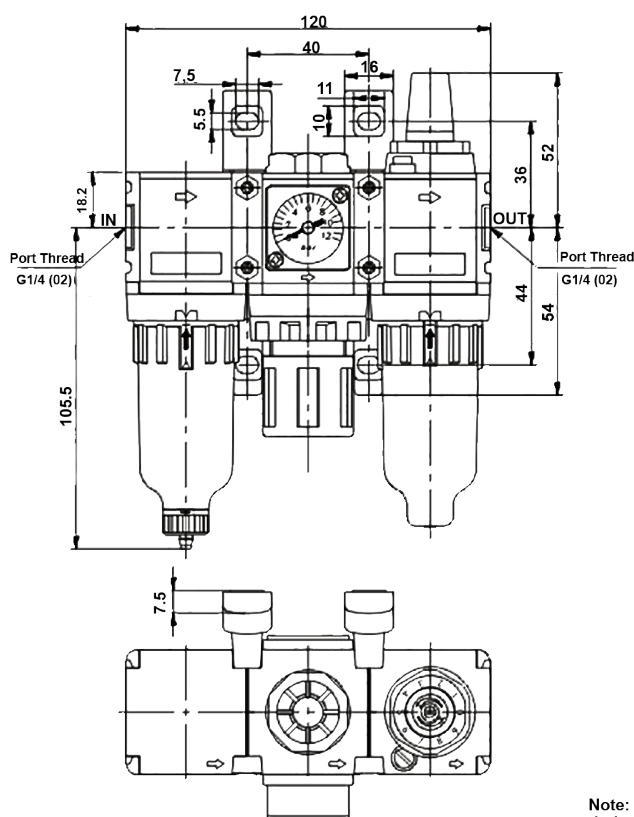
## Ordering code



① <b>Model</b>	-	② <b>Port Size</b>	-	③ <b>Drain type</b>	④ <b>Pressure gauge</b>	-	⑤ <b>Reflux valve</b>
SFL1: F.R.L unit		02: 1/4"		M: Manual	Blank: No gauge		Blank: No reflux
SFL2: F.R.L unit		03: 3/8"		A: Automatic	S: Square		R: Reflux valve
		04: 1/2"			C: Circular		
SFL3: F.R.L unit		04: 1/2"			D: Digital		
		06: 3/4"					

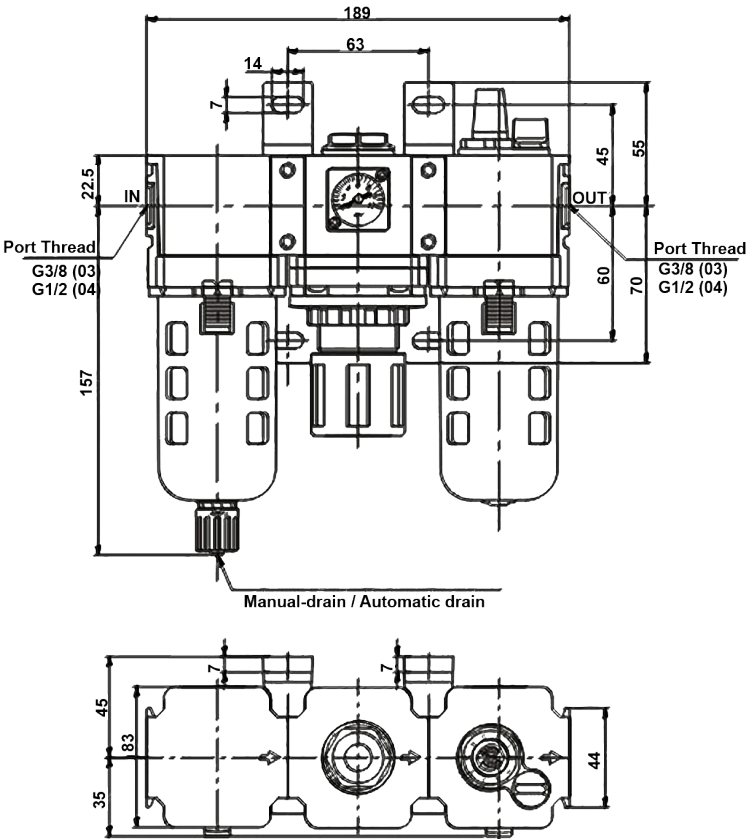
## Dimensions

### SFL1

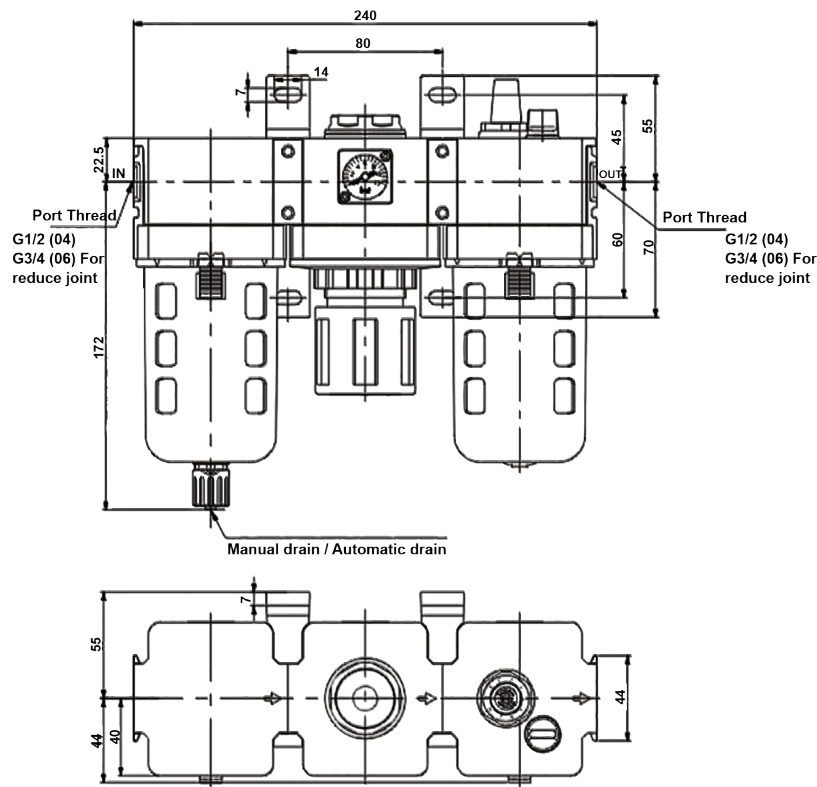


Note: Manual drain can insert IDΦ4 PU tube at drain outlet.

**SFL2**



**SFL3**



Note: Manual drain or automatic drain can insert ID  $\Phi 5.5$  PU tube at drain outlet.